
TOPIC: GUIDE JAW HEADPLATE
CONCERNS: ALL SANDVIK BOLTING EQUIPMENT FITTED WITH GUIDE JAW HEADPLATES (DM100 SERIES, DM300 SERIES)

The Owner of machinery has a liability to inform and when necessary to train according to the content of this Bulletin all the personnel (like operators, maintenance personnel) whom this Bulletin concerns.

BULLETIN NUMBER: TB1504

Possible occurrence of topic:

<input checked="" type="checkbox"/> Maintenance	<input type="checkbox"/> Transport
<input checked="" type="checkbox"/> Operation	<input type="checkbox"/> Trimming
<input checked="" type="checkbox"/> Spare Parts	<input type="checkbox"/> Other:

Market area:

<input type="checkbox"/> Australia, New Zealand	<input type="checkbox"/> EU
<input checked="" type="checkbox"/> Canada, USA	<input checked="" type="checkbox"/> RSA
<input type="checkbox"/> China	<input type="checkbox"/> Other:

Purpose

To advise owners and end users of the following upgrades available for the DM100 and DM300 series mobile bolters with integrated hydraulic guide jaw arm head plates.

Description

The following upgrades are available to improve operator interaction with the hydraulic guide jaws used on roof bolters. Soft flexible guards have been added around the entry of the head plate to limit access to the guide arms actuation zone. Also a pinch point warning label is to be added to the area to give the operator visual warning of this area.

Further upgrades are available to distinguish the operation handles of the valves. It is recommended that the guide jaw actuation handle be separated from the primary feed handles by either:

- i. Increasing separation distance by moving the guide jaw function away from the feed controls
- ii. Change the handle operation direction, e.g. rotating 90 degrees
- iii. Using different heights of handles to distinguish primary controls
- iv. Using shaped identified handles for specific functions

Engineering Action

1. Soft Guards and warning label

The below image shows a typical arrangement with the guards and label fitted.



Guards and retaining plates

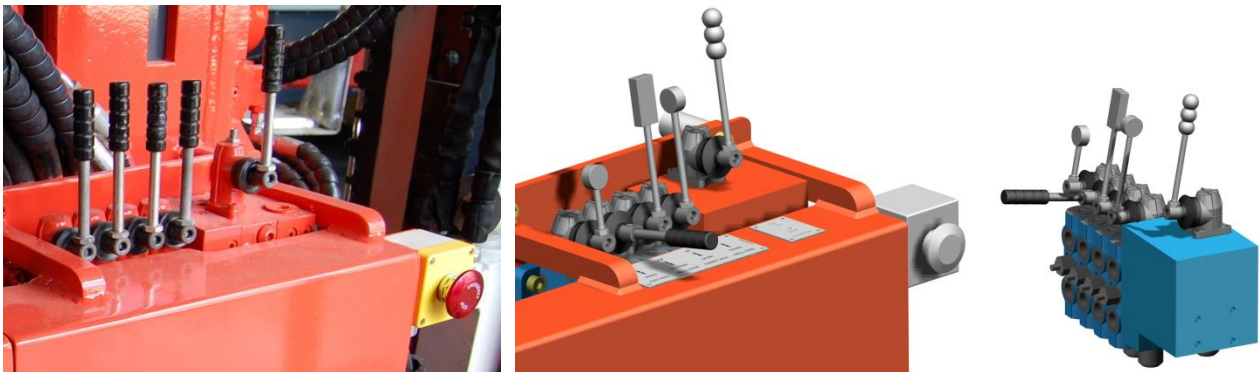
- 2 x BU00004640 – Guard
- 2 x BU00004639 – Retainer Strip
- 6 x M12 x 35mm LG Button Head Bolt
- 2 x Flat Washer M12
- 2 x M12 Nyloc Nut

Warning label

- 2 x BU00004672 – Warning Label

2. Differing control identification and location options

The below image shows the comparison between an original arrangement to options.



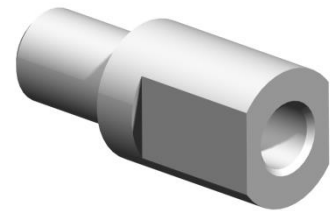
The following handle order positioning is recommended but not always possible depending on actual configuration on the machine. If possible it is ideal to separate the Feed and Bolt Thrust (Fast Feed) functions and to separate the Feed and Guide Jaw functions. This is to minimize the chance of incorrect selection of actuation control handles, i.e. selecting fast feed when drill feed was intended, or closing guide jaw when drill feed was expected.

1. Rotation (3 balls)
2. Feed (Round Flat Disk 90 degrees)
3. Timberjack (Rectangle)
4. Guide Jaw
5. Bolt Thrust (Round Flat Disk)

Recommendations

1. Add the soft flexible guards and warning label to all guide jaw head plates.
2. Improve the ability to distinguish between the Feed and Guide jaw control handles. Some methods for this are mentioned in this bulletin:
 - i. Separating controls by distance
 - ii. Rotating handles so operation out of phase
 - iii. Varying the height of the control handles
 - iv. Using shaped identified control handles
3. Ensure that the new orientation does not create additional hazards, e.g. a horizontal handle may be readily operated by contact with the operator's body.

The Handle part numbers indicated below have a M8 male thread. For Valvebank assemblies that use a different handle connection, an adaptor will be needed. There is a part number provided for a M10 adaptor, as shown. Please note this adds 20mm to the length of the handle.



Part Numbers:

BU00004672 – Warning Label
BU00004640 – Guard
BU00004639 – Retainer Strip

M12 x 35mm LG Button Head Bolt
Flat Washer M12
M12 Nyloc Nut

BU00015775 Handle, Bolt Thrust Pyramid
H60050S Handle, 100mm LG Rotation – Three Balls
H60050L Handle, 150mm LG Rotation – Three Balls
H60051S Handle, 80mm LG Feed – Disc
H60051L Handle, 130mm LG Feed – Disc
H60052S Handle, 100mm LG Timberjack - Rectangle
H60052L Handle, 150mm LG Timberjack - Rectangle
H60053S Handle, 70mm LG Standard
H60053L Handle, 120mm LG Standard
BU00017456 M8 Female (20mm LG) to M10 Male Adaptor

Contact

Contact your Sandvik representative for further information or any questions you may have.

Approved by: **Product Line Manager – IAN GREYVENSTEYN**